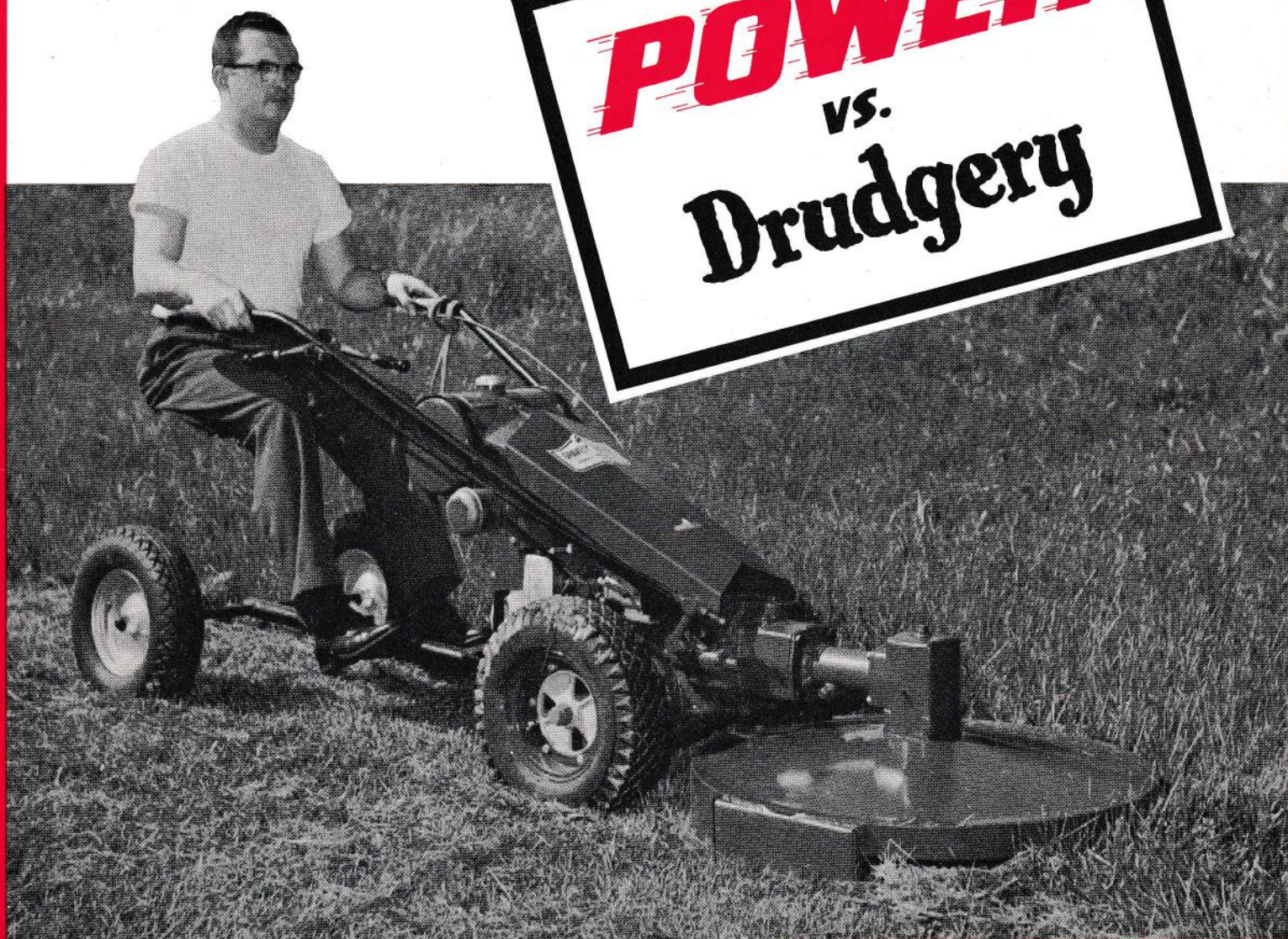


GRAVELLY

POWER
vs.
Drudgery



MORE PERFORMANCE

MORE POWER

MORE FOR YOUR MONEY

GRAVELY



Are You Getting the Rewards of Time-and-Work-Saving Power?

Modern country living is enjoyable today only because POWER takes the drudgery from the chores that come with country living.

To give yourself the leisure to enjoy your home, to get the fullest satisfaction from doing your work easily and efficiently, to have an attractive home with well-kept grounds . . . you must use POWER.

But the right power tools must be selected with care.

To get the most effective tools for your money, you must be sure they are designed for the job, built correctly, and are backed by a reliable service organization.

The Gravelly meets these qualifications. It is designed right, manufactured right—and comparing dollar cost per unit of horsepower, you pay less for the Gravelly. As a dividend, you get the finest tractor money can buy, with quality features unobtainable in other tractors.

Even more important than an economical price is the power delivered to the job. The worst mistake you can make is to buy equipment that doesn't deliver the power you need!

The Gravelly Tractor has power to spare! Now, 6.6 HP!

The mechanical features of the Gravelly are discussed in the last pages of this booklet. First, you will want to know just what the Gravelly can do for you in solving your particular problems. In the pages to follow we will show you how each Gravelly Attachment can make your country living more pleasant and productive.

Remember, the first requirement of any good equipment is power to do the job right.

The second is versatility—the ability to do many jobs well with one power unit.

YOU BUY ONLY ONE TRACTOR . . .

Select the Attachments You Need!

ONLY FOUR BOLTS TO REMOVE TO CHANGE POWER ATTACHMENTS

POWER CULTIVATE

2



PLOW PERFECT SEEDBED



HAUL 1/2-TON LOADS

POWER vs. Drudgery

Powerful 6.6-HP Gravely Tractor Offers 30 Tools To Save You Work!

The amazing versatility of the Gravely Tractor is illustrated briefly by the pictures on these two pages. You have a choice of performance-proved power tools that save you work and worry all year long!

Versatility, with Gravely Equipment, is more than just variety. It is a year-round selection of power tools that are designed as an integral part of the Gravely Tractor . . . balanced for easy handling, geared right for maximum efficiency . . . driven by splined steel shafts and gears direct from the Gravely Engine.

Variety in itself has no value. Gravely gives you variety plus more power at the job and the most sturdy and rugged design. The proof is in the performance of the powerful Gravely and its power tools. Gravely does more jobs better than any other equipment!

With the Gravely Tractor, and its optional electric starter, for the first time you can truly bring push-button power to your jobs.

These next pages show you each Gravely Attachment. You will see certain Attachments that will solve your particular upkeep and gardening problems. Awaiting you is the solution to your every lawn, garden and field problem! Select the tools you need for POWER instead of drudgery!

"I bought a Gravely last July and I wish to tell you that it is the very finest piece of equipment I have ever had on my place.

I have 2¼ acres and find it takes all the work and drudgery out of taking care of my yard and garden.

Before I got my Gravely I owned two other makes of garden tractors and had decided there wasn't any small tractor that I would have on my place. Then I saw my first Gravely. I arranged for a demonstration and I was very cautious about buying again, but finally I decided that it was what I wanted. And believe me it has come up to all my expectations and I can't praise it too highly."

KEITH DILLARD
West Frankford, Illinois



MOW LAWNS



MOW AND MULCH WEEDS



MOW WEEDS AND BRUSH



REMOVE SNOW

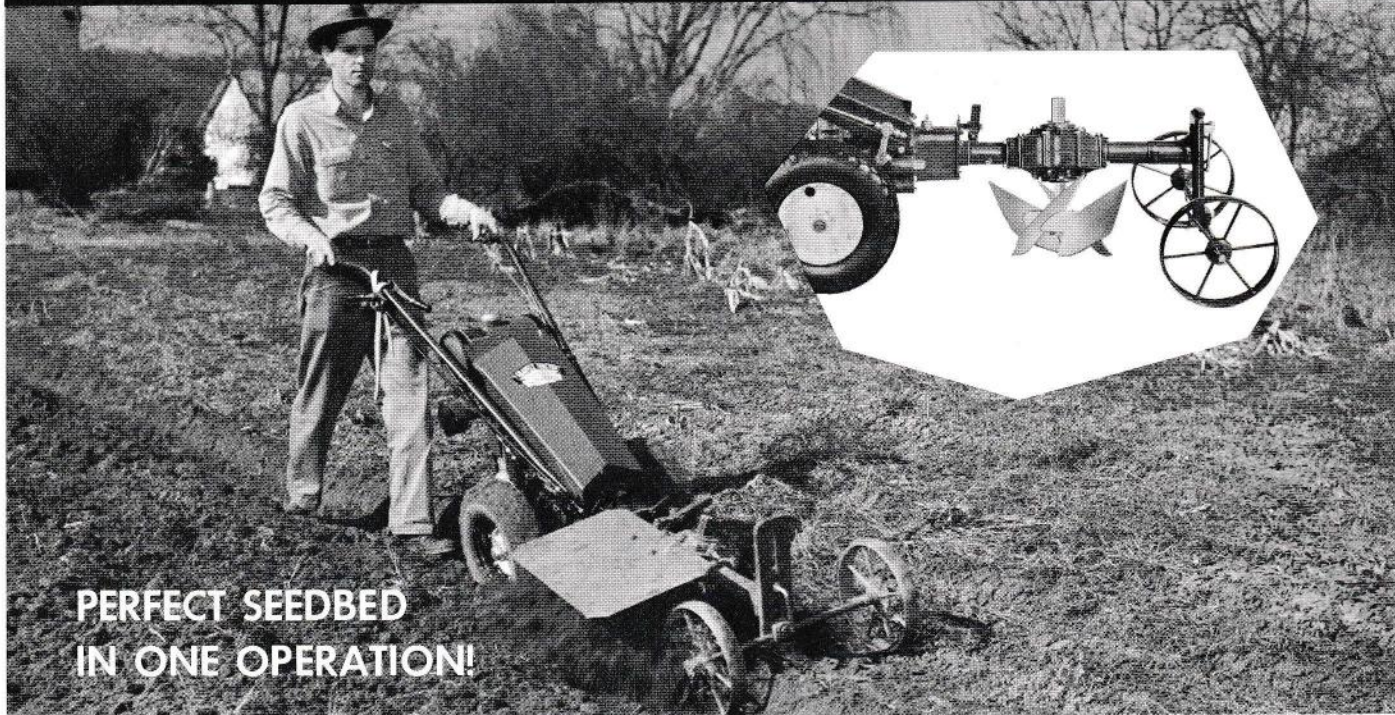


CLEAR LAND, CUT TIMBER



MOW FINE LAWNS

ROTARY PLOW - GRAVELY TWIN-TOOL



**PERFECT SEEDBED
IN ONE OPERATION!**

The Gravelly Rotary Plow gives you complete independence from the delay and inconvenience of depending on someone else to prepare your ground.

You plow when the ground is right, get better prepared ground, a better garden, with less work!

The Gravelly Rotary Plow prepares a better seedbed on an entirely different principle from the traditional turnplow and harrow. The Power-driven Plow cuts into the sides and bottom of the furrow 800 times a minute at the normal working speed of your motor. This means one of the four cutting blades is biting into the soil every half inch! You do not have to disc, harrow, or drag.

Weeds, trash and fertilizer are cut in and thoroughly mixed with the soil.



WITH GEAR REDUCTION
WHEELS

Unusually hard ground, or virgin sodland, can be plowed effectively by using Gravelly Gear Reduction Wheels. These special wheels reduce the forward speed of the tractor by half, without affecting the attachment speed. A demonstration will assess your need.

DEEP, EVEN SEEDBED

This action gives you a deep, mellow seedbed all the way down! In hard soils you can plow as deep as 7 inches. In soft soil, 10 inches. The plow cuts a furrow as wide as 10 inches, depending upon the soil conditions. You have a mellow, easy-to-work garden all summer long—less work to prepare, less work to cultivate!

EASY TO HANDLE

Operation of the Rotary Plow is easy. When plow is properly adjusted to the soil, under ordinary conditions plowing is simply walking behind the tractor.

SAFETY CLUTCH PROTECTED

The tough, high-carbon steel blades are shaped to move aside stones, roots and other obstacles less than twice the size of your doubled fist. Larger obstacles operate the Gravelly Safety Clutch, which protects both tractor and attachment from damage.

"This sod had not been plowed in years and the hay, timothy, clover and witch grass was above the gas tank in height and just as thick as it could be. It turned under beautifully."

MAJOR GEORGE C. COE
Center Lovell, Maine

TURNPLOW

For those who prefer it, a conventional 7 inch Turnplow is available. Gear Reduction Wheels should always be used with the Turnplow. Rear Hitch is required.



TERRACING: Since the Plow throws the soil to the right, removal of the dirt shield and plowing in one direction will terrace grounds quickly and easily.



HILLING for such plants as sweet potatoes is carried out quickly and easily. Simply make approximately six cuts with the plow and perfect hill is formed!

GARDENING - ROTARY CULTIVATOR

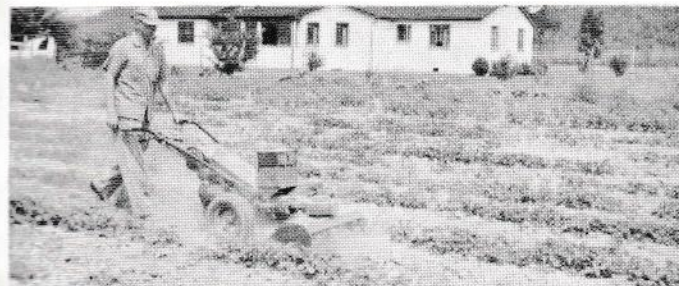


POWER CULTIVATION FOR YOUR GARDEN!

Now you cultivate with power! The Gravelly Rotary Cultivator makes your garden chores a snap—your garden is weed-free, aerated—with no effort except guiding the powerful Gravelly!

The Rotary Cultivator Hood has detachable sides, a great convenience in your gardening work. When working bushy row crops, keep the sides on . . . this protects the plants, gives a smooth cultivated area between the rows.

When working crops such as sweet corn, where the best practice is to throw the dirt into the plants, remove the sides. The center of the row will be cleanly cultivated, and a ridge of tilled soil will be moved into the plant row . . . the same effect as if you hand-hoed the soil, pulling it around the plants.



Strawberry Cultivation is fast and easy . . . and the Rotary Cultivator is perfect for Strawberry renovation, accurate control of row mat plantings. Any berry crop is cultivated better with the Gravelly Rotary Cultivator!

The sturdy Rotary Cultivator attaches to the Gravelly Rotary Plow with only four bolts. The tines, of strong, high-carbon steel, have a special self-sharpening design, are strong and dependable. Width: 26 inches.

SAFETY CLUTCH PROTECTED

No attachment breakage with the Gravelly Rotary Cultivator . . . instead, if you hit a rock or other obstacle the Safety Clutch operates and protects attachment and tractor from damage.

TWIN-TOOLS MAKE YOUR GARDENING EASY

The Gravelly Rotary Plow and Rotary Cultivator combination gives you a twin-purpose attachment that handles your gardening jobs with POWER all summer long.

In the spring, the Rotary Plow prepares a perfect seedbed in one operation. Then, after your garden is in, attach your Rotary Cultivator to your Rotary Plow Drive . . . and you have power cultivation the rest of the season!

The Rotary Cultivator tills to a depth of about three inches in ordinary soils.

LAWN RENOVATION

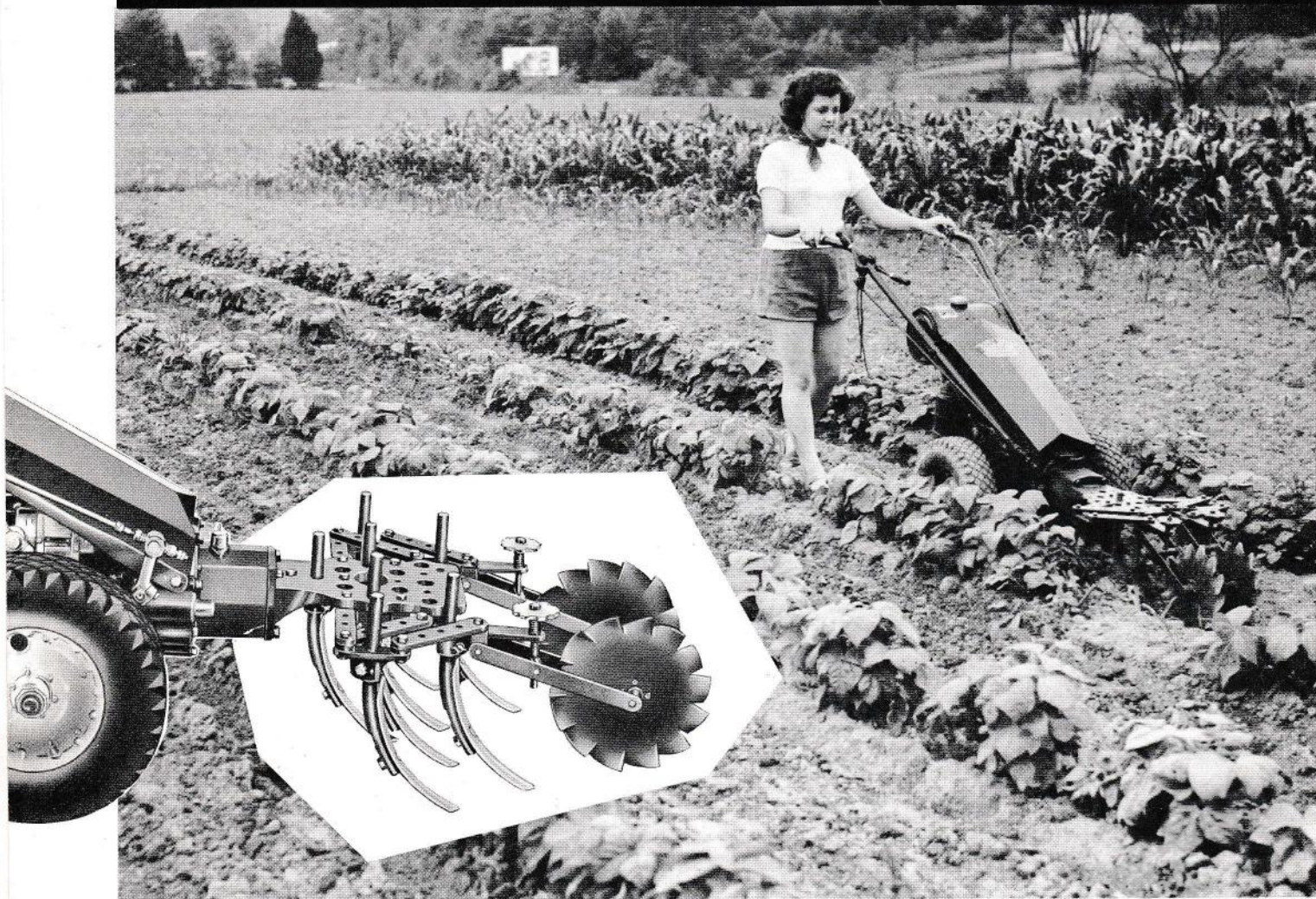
The Rotary Cultivator can be used for Lawn Renovating, for a smooth, fine grass seedbed. Plow first, then use the Rotary Cultivator in reverse to leave an unmarked, level grass seedbed.

New ease, new convenience in your garden work—never before has your gardening been as easy!

PLANTER DRILL is an inexpensive attachment that uses the Rotary Plow Drive as power take off. It digs a circular hole, 11" in diameter for the small blades, 21" for the large, to a maximum depth of 24 inches. Perfect tool for fast, easy digging for planting trees and shrubs.

DITCH DIGGING is done by simply making several cuts in the same furrow, dropping the Rotary Plow a little more each time. For deep ditching, longer shafts are available.

TOOL CULTIVATION - GRAVELY MAKES



Cultivate Easily, Efficiently, With a Gravely!

Get rid of old-fashioned, back-breaking hand and hoe methods of cultivation! Instead of hours of drudgery, a few minutes with the powerful Gravely and your garden is weed-free!

Remember, you plow once or twice a season, but you cultivate many times. Think of the time and effort you can save by doing this work with **POWER!**

Besides the saving in time and energy, you have the added pleasure of doing your work right—and when you want it done!

The Toolholder and Cultivating Tools are out in front—you can see where you are cultivating without strain. The Tractor and Cultivator are balanced for easy guiding and turning. This easy handling, out-in-front Toolholder protects your plants from damage.

The arrangement of tools is flexible. The Parallel Bars on the Toolholder expand and contract with a

simple adjustment. You can cultivate a width of from eight to 30 inches. For even wider cultivation, extra sections of the Parallel Bars are attached to the toolholder.

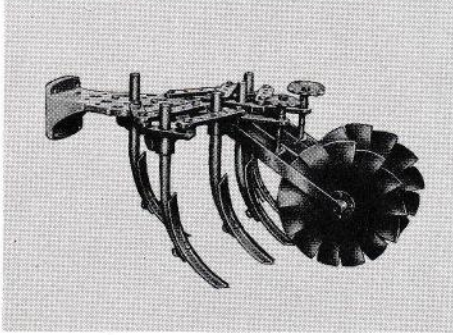
The depth of cultivation is adjusted by means of a Handwheel on the Depth Adjusting Wheels. This allows you to set the exact depth needed for any job quickly and effortlessly. In addition, each of the steels can be set individually, so you can cultivate deeper in the center and shallower at the sides.

All the different cultivating implements shown on these pages are used on the same Toolholder. You select only those needed for your conditions.

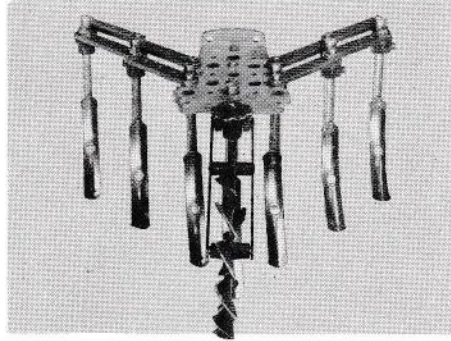
Your Gravely meets all your cultivating requirements—makes your gardening a pleasant task instead of drudgery!

GARDENING FUN - GARDENING TOOLS

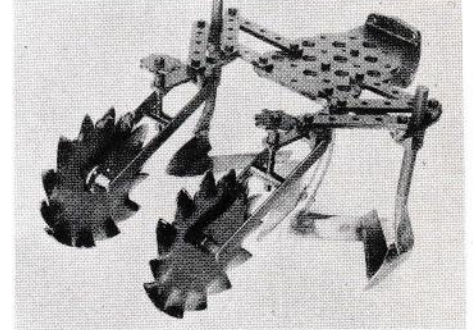
All Tools Used On the Same Toolholder



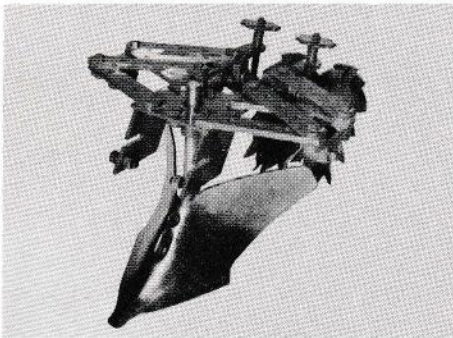
FIVE STEEL SET-UP is the standard arrangement, uses 1 $\frac{1}{4}$ " steels. Extra steels and shanks may be purchased. The picture at the top of page 6 shows the method of arrangement when seven steels are used. Steels are available in 1 $\frac{1}{4}$ ", 1 $\frac{3}{4}$ " and 2 $\frac{1}{4}$ " sizes. All cultivating tools are used on the same toolholder, are interchangeable.



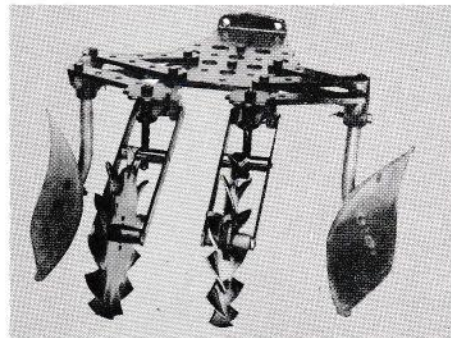
SEVEN STEEL V SET-UP uses one Depth Adjusting Wheel with the parallel bars arranged to form a V. Depth is obtained by a single adjustment of the Depth Wheel. The Cultivator will follow the contour of the ground closely, and the last two steels shield foliage and vine crops so they will not be bruised by the wheels.



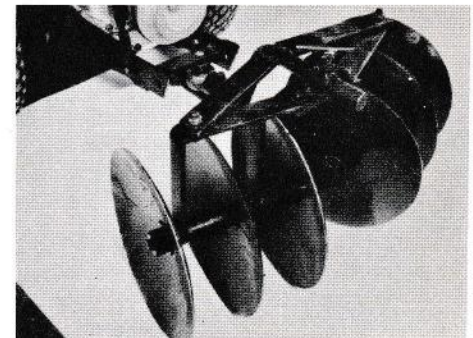
SWEEP AND HOE SET-UP uses an improved Sweep in the center and a right and left Gravelly Hoe on either side. The Sweep may be obtained in 8, 10, 12 and 18-inch sizes. The Sweep clears the center weeds and trash, and the special Gravelly Hoes eliminate most of the hand work close to the plants.



FURROWERS are available in 10 or 12-inch sizes, may be used front or rear to lay off rows for planting. Many users also find it a good tool for digging potatoes. For smaller furrows, seven-inch shovel steels are available. These are very handy for laying off small seed crops, and can be used for center row cultivation.



6-INCH HILLER SET-UP uses right and left hillers, can be used for closing rows as well as hilling. They throw dirt away from or around the plants, as you desire. You can use a furrower in the center at the same time, bringing dirt from the center of the row to the hillers, which in turn heap it around the plants.



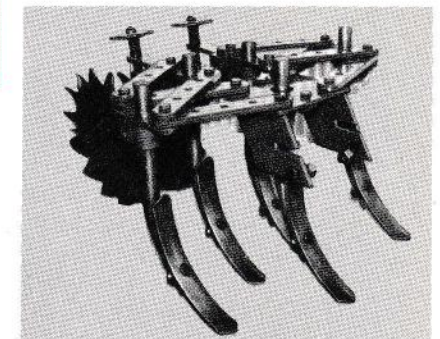
DISC HARROW is used for berries, flowers, discing in cover crops. The six 11-inch discs are adjustable as to angle. A heavy weight may be added if needed. Rear Hitch required.

REAR TOOLHOLDER PLATE

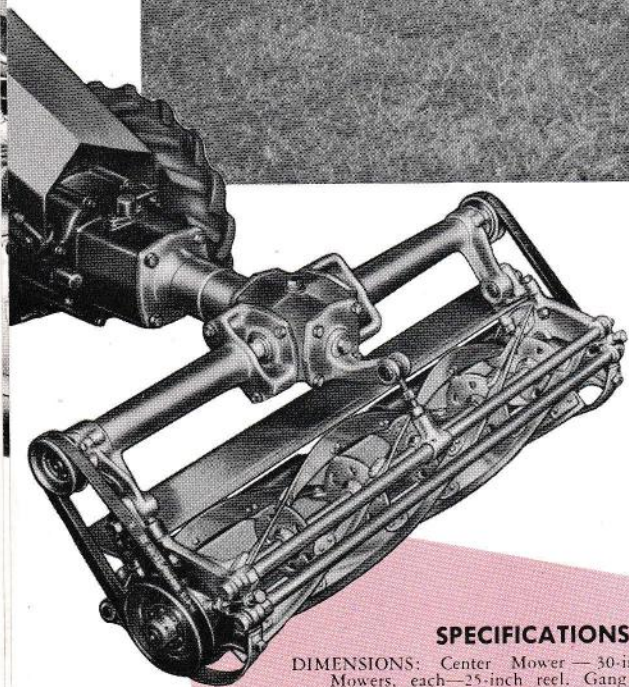
For those users who prefer to use their cultivating tools in the rear, eliminating tire tracks, the Rear Hitch Toolholder plate is available. Parallel Bars are attached to it in the same manner as the Front Toolholder.

The Rear Toolholder is particularly useful when furrowing, and in digging potatoes with the furrower.

All cultivating tools and set-ups may be used on the Rear Toolholder. The Front Toolholder or Attachment Boss must be used on the front of the tractor when the Rear Toolholder is used, to protect the transmission from dust and grit. Rear Hitch is required.



REEL MOWER - GRAVELY MOWING



30-Inch Power-Driven Reel Mower For Clean-Cut Lawns

You will be truly proud of your lawn if you care for it with a Gravely 30-inch Reel Mower.

The Gravely Reel Mower is built to the exacting standards demanded by men who do volume mowing at parks, cemeteries, and industrial plants. The Gravely gives you twice the power of the usual power mower—and 12 inches more cut each pass!

Your lawn will be lovelier because the Gravely has certain features that give you clean, smooth cutting. The Reel Mower has Swivel Action, which means it follows the ground contour— independent of the Tractor wheels. It doesn't streak your lawn. A Safety Clutch protects the reel and tractor from damage if you hit rocks or other objects.

You owe it to your lawn—and to yourself—to see the Gravely Reel Mower in action.

SPECIFICATIONS

DIMENSIONS: Center Mower—30-inch reel. Gang Mowers, each—25-inch reel. Gang Mowers overlap Center Mower 2½ inches. Cutting swath of complete unit is 75 inches.

GEARS: All gears are of machine cut steel and enclosed.

CASTINGS: Malleable.

BEARINGS: Timken Roller and Ball Bearings throughout.

CUTTING HEIGHT: ¼ to 2 inches.

SELF-LAPPING: Center units and Gang units are self-lapping by reversing Mowers.

NEW EASE AND SPEED—

Riding Sulky

You can do more work, with less effort, when you ride. A Gravely Riding Sulky lets you work steadily, comfortably, with a minimum of fatigue. The Tractor is easier to handle . . . even physically handicapped people can enjoy doing their own mowing! The Sulky has a comfortable seat and precision-bearing pneumatic tires both for riding comfort and to protect your lawn.



FOR LOVELY LAWNS - GANG MOWERS



75-Inch Gang Mower Mows Large Lawns Fast!

The 75-inch cut Gang Mowers make short work of large area mowing. The 25-inch Gangs are attached to the 30-inch Reel Mower in a few minutes, removed as quickly.

The complete unit is **power-driven**. The Gangs float over the ground contour because they are attached to the Center Mower by a flexible coupling. They always follow ground contour, regardless of the position of the tractor wheels.

With the Steering Sulky, you will have a new and amazing experience in easy mowing—easy guiding and maneuvering. It takes the last bit of work from volume mowing, turns it into a pleasant and enjoyable task.

For a truly fine lawn, use the Gravely Gang Mowers!

RIDE WHILE YOU MOW!

Steering Sulky

The last word in mowing ease . . . so easy it's like driving a car with power steering! Instant, precise control and response . . . even trimming work is fast and accurate.

One-finger steering, even on rough ground. And the Steering Sulky is so maneuverable that you mow a circle 14 inches in diameter with Gangs . . . and it is safe to use, even on slopes!

"A Fine Lawn Deserves A Fine Reel Mower"

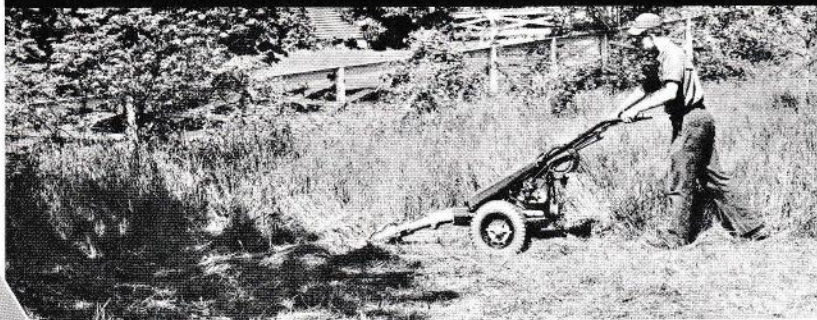
Only the Gravely Reel and Gang Mowers give you streak-free mowing. On most mowers, caster wheels support the mower in front. The grass is not cut by the reel because it follows the caster wheels. The next day, the uncut grass springs back up to show as streaks in the lawn. But the Gravely Reel rides on rollers which follow the cut! You get smooth, even, streak-free mowing.

Many built-in safety features protect your investment. You have a spring loaded Reel that holds its adjustment, yet can "give" if you hit an object that would damage the Reel.

The Gravely Reel and Gang Mowers are convenient to use and adjust. One turnbuckle on each unit controls height adjustment from $\frac{3}{4}$ to 2 inches. Four bolts remove and replace the Reel Mower—2 pins and a coupling for the Gangs. The design allows you to mow under trees and shrubs—and the reverse means you back up with power.



SICKLE MOWING - GRAVELY FOR



SICKLE MOWING

Mowing Brush, Field and Lawn

The Gravelly with its Sickle Mower attachment mows tall grass, even weeds and brush as much as three-quarters of an inch thick!

The Gravelly Sickle Mower is without equal because it is **DESIGNED** for heavy duty cutting. Gear and splined steel shafts drive the mower direct from the powerful Gravelly engine—deliver that **EXTRA** power you must have for the tough jobs!

BETTER MOWING WITH SWIVEL ACTION

Yes, better mowing because the unique, patented Gravelly Swivel Action allows the Sickle Blade to follow the contour of the ground regardless of the position of the tractor wheels. This makes power mowing of banks, terraces, and rough land practical when you

would ordinarily expect to do these jobs by hand.

POWER REVERSE

You can take your mower under trees and shrubs, into hedge rows and corners, then by simply moving a lever the Gravelly will back out under its own power. Many hand cutting jobs are eliminated because your Gravelly Sickle Mower is so easily maneuvered in these close places.

PLENTY OF POWER

You must have power to spare to do this heavy work. The big, 6.6 HP Gravelly engine gives you that power, delivered directly from the motor to the cutting blade. No belts or chains to slip, wear or break—instead you get power to spare for all your difficult mowing jobs!

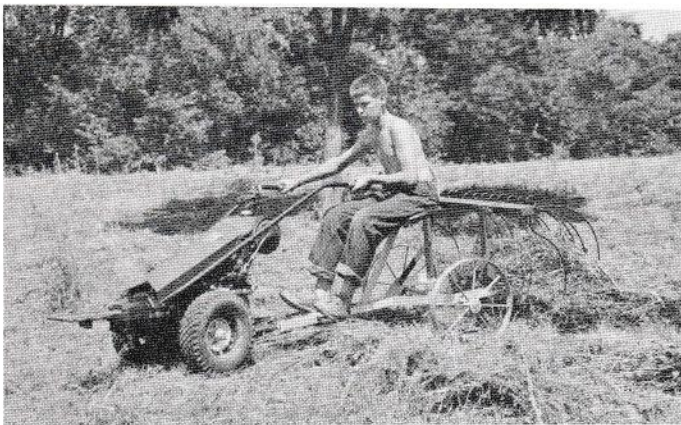
THE TOUGHEST MOWING JOBS

STEEP SLOPES MOWED EASILY

When your Tractor is equipped with either Dual Wheels or Extension Axles you mow slopes as steep as 60%. Either of these accessories lowers the center of gravity of the Tractor, and adds weight which gives more traction. You can mow almost anywhere a man can walk!

SAFETY CLUTCH PROTECTION

If you should happen to run onto an iron stake, or any other obstruction, the Gravely Safety Clutch will stall the mower without damage.



48" HAY RAKE

After the high weeds and grass are cut, attach the 48 inch Hay Rake and clean up. The Hay Rake is equipped with a comfortable riding seat. The Rake Lever and tractor controls are within easy reach.

SICKLE MOWER SPECIFICATIONS

SICKLE BAR: This consists of a conventional Sickle Bar with an oscillating mechanism. The drive Head is located on the cutter bar for balance; has swivel action, allowing the bar to conform to the contour of the ground independent of the tractor.

GEARS: All gears enclosed in dirt-proof housings with Timken Roller Bearings and running in oil.

CASTINGS: All vital parts of the oscillating mechanism are made from chrome alloy steel with certified, malleable castings.

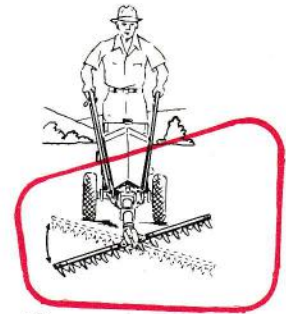
CUTTER BAR: The 42" Cutter Bar will cut from a 36" to a 39" swath and average from 3 to 4 acres a day in the roughest sort of cutting.

WEIGHT: 100 pounds. When packed, 150 pounds.

OVERALL DIMENSIONS: 42" x 42".

BLADE SWIVELS TO FOLLOW CONTOUR

The exclusive Gravely Patented Swivel Action of the Sickle Mower allows the Cutter Bar to follow the contour of the ground . . . regardless of the position of the tractor wheels.



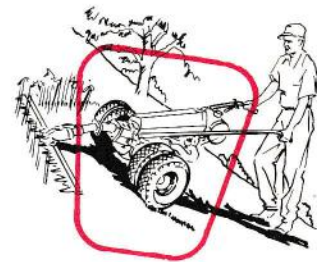
EXTENSION AXLES FOR STEEP SLOPES

The 35-inch Extension Axles will allow the Gravely to work on the banks with as much as a 60% angle. These Extension Axles are easily removed, quickly attached.



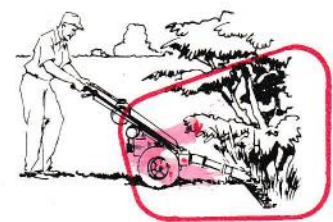
DUAL WHEELS ADD TRACTION

Dual Wheels allow you to mow on steep slopes, give you better traction anywhere. They lower the center of gravity, give you twice the traction, and add weight for a better grip on the ground. Especially helpful on rough ground.



EASY TO MOW UNDER TREES

The long "neck" of the Sickle Mower mounted on the front of the Tractor allows you to reach under trees, shrubs, bushes, hedges—the reverse allows you to back out quickly and effortlessly.

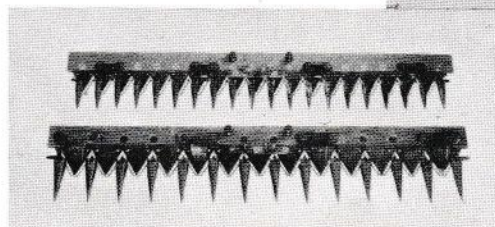
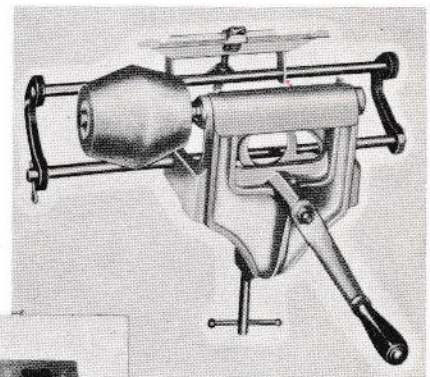


SICKLE GRINDER

Sharpens six sections of a Sickle Mower Knife before reclamping. It only takes a few minutes to sharpen the complete knife, and sharp knives mean quicker and better work.

SICKLE BARS

Shown below are the two sickle bars—top, the 2-inch Sickle Bar used for lawns and fine cutting. Bottom, the 3-inch Sickle Bar, used for high weeds, heavy cutting of all kinds. Same rugged construction, the only difference is in the size of guards and sections.



ROTARY MOWING - LEAF MULCHING



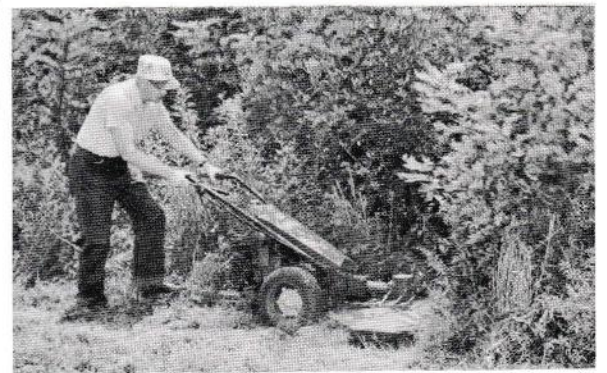
One Mowing Unit For Lawns and Weeds!

Now you cut the tough weeds, and the fine lawn, with one powerful Rotary Knife Mowing attachment!

The new Gravely Rotary Mower gives you a big cut—30 inches wide—to make short work of mowing jobs.

Think of the advantages of one mowing unit to do both your mowing jobs! You mow the lawn cleanly and evenly, and at the same time get rid of unsightly Buckhorn and Dandelion stems. This gives you a cleaner, lovelier lawn. And the grass is not windrowed on your lawn . . . instead, most of it is shredded into a mulch that quickly decays into organic matter. This organic matter enriches your lawn, makes it better nourished!

Then, with the same mower, you go right on mowing weeds,



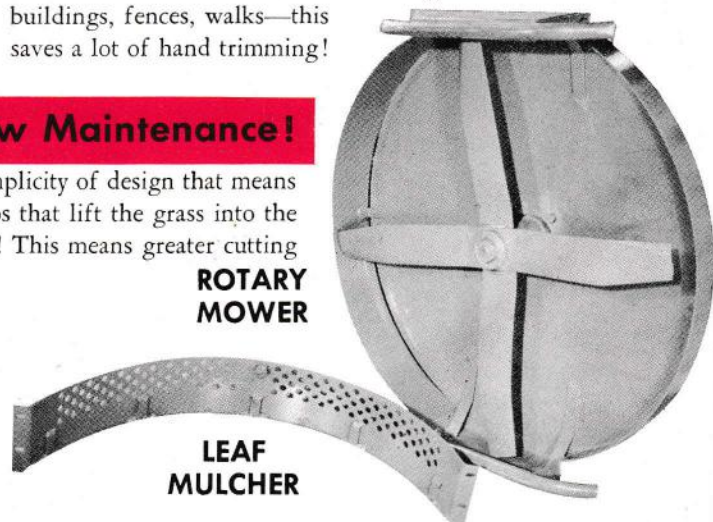
without loss of time! And when you mow weeds with the Gravely Rotary Mower, the weeds will practically disappear. When properly operated, the mower will cut and shred the tallest weeds . . . and remember this big advantage! The Gravely Rotary Mower is SELF-PROPELLED! No pushing or pulling . . . you just guide the Gravely, the Tractor does the work. You even have a reverse.

And the Rotary Mower trims and cuts closer to obstacles than the conventional mowers. You get within an inch of buildings, fences, walks—this saves a lot of hand trimming!

Design Simplicity Means Low Cost—Low Maintenance!

This picture shows you the rugged construction, the complete simplicity of design that means long lasting satisfaction. The two knives are heavy, have curved tips that lift the grass into the fast-whirling blades that are slanted to slice—not beat—the grass! This means greater cutting efficiency.

The few parts mean low maintenance. The knives are sharpened quickly and easily. There are no complicated adjustments . . . simply change the collars for the height you require. These collars are different sizes, and by using them in combination you obtain a cutting height of from 1½ to 2½ inches.



- CHAIN & CIRCULAR SAWING



NO MORE Leaf Raking— NO MORE dangerous leaf fires!

Now you can say good-bye to the back-breaking drudgery of raking leaves . . . the unpleasant smoke and danger of fire from leaf burning.

The Gravely Leaf Mulcher attaches to the Rotary Knife Mower in a few minutes. Then off you go, clearing a 30" swath of leaves as you stroll along . . . watching the leaves vanish!

The Leaf Mulcher is a perforated Rear Fender that catches and holds the leaves until they are sliced fine enough to escape the small holes . . . much more efficient than beating the leaves up with blunt or straight edges.

The slicing and lifting principle makes the Gravely Mulcher effective even in deep, damp leaves!

SPECIFICATIONS

DRIVE: Single Drive for Circular, Chain Saw; Rotary Mower and Leaf Mulcher, all interchangeable. Splined Steel Shafts, Bevel Gears, completely enclosed.

BEARINGS: Tapered Roller and Ball Bearings.

ROTARY MOWER:

HOOD: $\frac{3}{8}$ " Steel, Fenders, $\frac{1}{8}$ " Steel.

BLADES: Two 30-inch Blades of Hi Carbon steel, forged and ground cutting edge.

CIRCULAR SAW

The 18-inch blade of the Circular Saw slashes saplings, small trees, weeds and sprouts off at ground level. You can then mow over the area to keep it cleared.

The Circular Saw, like the Chain Saw, can be set at any angle.

SPECIFICATIONS

CHAIN SAW:

CHAIN: Oregon Chipper Chain, Fast File Tooth.

CHAIN BAR: Special Tempered Alloy Steel. $\frac{3}{4}$ " maximum width. Length from stop to end of bar, 24". Optional Length bars and chains on request.

CHAIN SPROCKET: Carbureted Steel.

CIRCULAR SAW:

TEETH: Cordwood Set.
BLADE DIAMETER: 18 inches.



COMBINATION SAWING TOOL Clear Land, Cut Timber

Both the Chain Saw and the Circular Saw of this powerful combination tool operate from the same power take off (or "drive"). In addition, the power take-off also operates the Gravely Rotary Mower and Leaf Mulcher.

When you purchase the "drive" for any of these three tools, your additional investment in the other tools is very small!

CHAIN SAW

A heavy-duty, self-propelled chain saw for felling and bucking timber. Goes to the job under its own power—and you stand upright and comfortable to saw!

The saw is adjustable to any angle vertically or horizontally. It will notch, fell and cut up timber quickly and conveniently. Usually you can fell a large tree in less than three minutes, including the time it takes to position the tractor and set saw angles!





POWER SPRAYER

50 Gallon Sprayer Protects Lawn and Crops

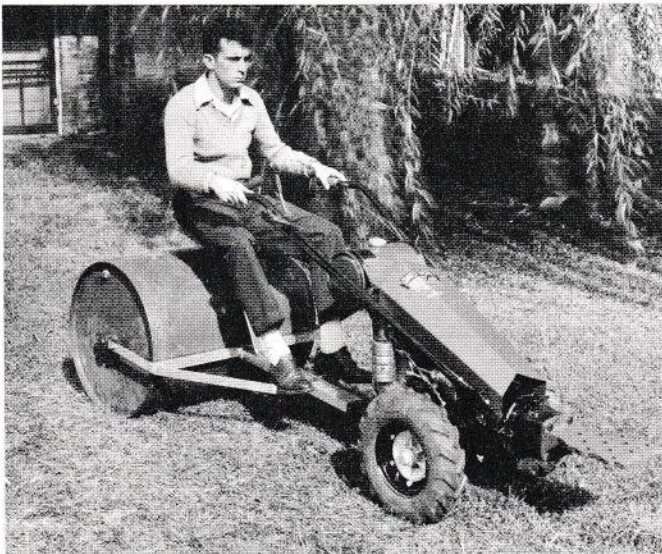
Here is the Power Sprayer you need to insure your valuable crops, fruit trees and shrubbery against insect damage. Many other important jobs are done with this same attachment. When not in use spraying insecticide you can use it for watering lawns, washing cars and windows, whitewashing, disinfecting and cleaning stables, chicken houses and sheds, applying liquid fertilizers, fire-protection and cleaning driveways.

The Gravely Sprayer has a tank capacity of 50 gallons, a spray capacity of four gallons a minute at a pressure of 300 pounds. Agitator is propeller type, driven by Vee-Belt, as is the pump, directly from the Tractor.

The wheels are 12 by 4 inches with 20-inch outside diameter. Since both the Tractor and Sprayer unit are equipped with pneumatic rubber tires, it can be used advantageously in many places about homes and estates because the wheels will not damage lawns or beds. Portability of an estate sprayer is extremely important. With large units it is sometimes impossible to maneuver them near enough to the job to do it efficiently.

If your work does not require a 50 gallon sprayer, we offer a 15 gallon capacity "Home-n-Garden" Sprayer. Information on page 20.

PROTECT YOUR INVESTMENT IN YOUR LAWN!

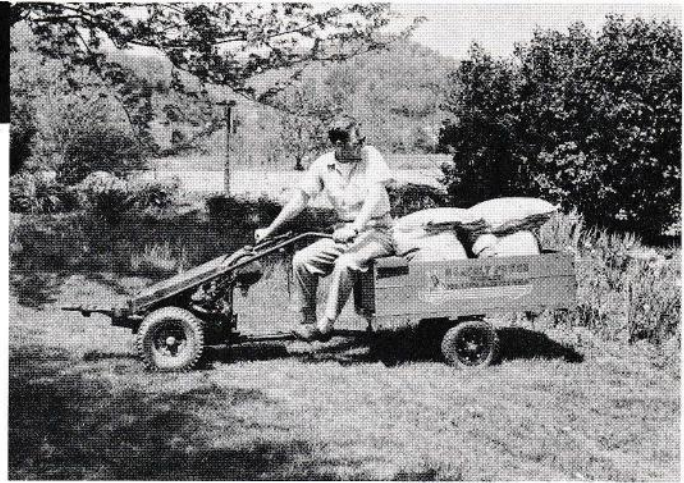


LAWN ROLLER

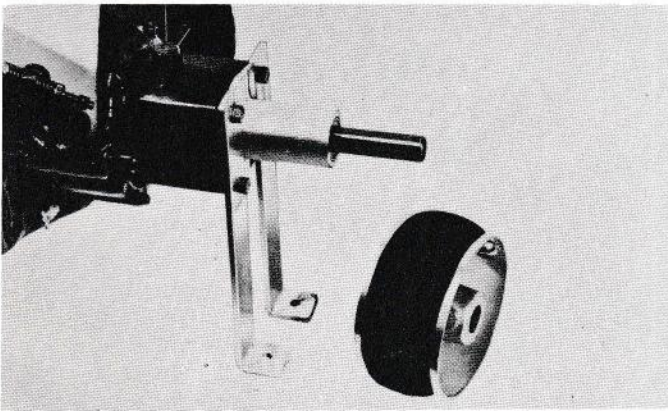
You want a velvet-smooth lawn—and the Gravely Water Ballast Roller will help you. The Roller levels your lawn, takes out unsightly humps and depressions. And more important still, the compacting of the soil will give you a close-knit, firmly rooted lawn, resistant to disease, weeds and drouth. The Roller will follow the contour of the ground. The edges are rounded to prevent cutting or injury to your lawn. You have plenty of power with the Gravely Tractor to pull this load, and you will find that the Roller does a fast and efficient job. The roller is 32" wide, weighs 655 pounds when loaded. *Particularly useful for rolling down Frost and Freeze damage.*

HAULING CART

You always need a Transportation Cart to do odd jobs of hauling. A thousand pound load of apples, wood, hay, alfalfa, feed, or other material can be handled with this sturdy, self-dumping cart. The body is wood, reinforced by steel. Merely releasing a latch dumps the cart with no effort. The body may be removed and special racks attached for hauling hay, alfalfa and other bulky crops. The body is 48 inches long by 30 inches wide by 12 inches deep. The Cart is equipped with pneumatic tires, precision ball-bearing wheels, and a seat.



HAULS ½ TON LOADS WITH EASE!



POWER TAKE OFF

The Gravelly gives you plenty of power to drive most belt driven machinery found on an average country home or farm. The attachment may be bolted to the floor and the tractor run up to it when power is desired.

The Power Take Off is required with several of the Gravelly Use-Multiplier attachments, such as the Home-n-Garden Sprayer, Pump, and Generator.

A four-inch pulley is furnished with the PTO, but any standard pulley up to 20" may be used.

DUAL WHEELS

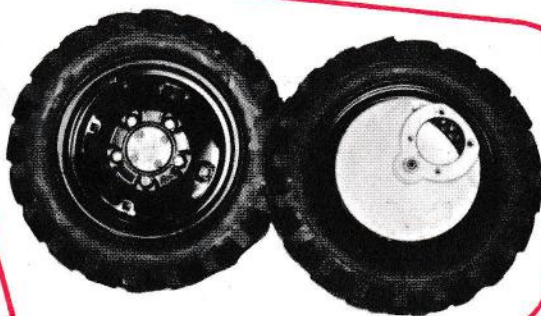
The Dual Wheels are required when using the Gravelly Steering Sulky for best results, and should always be used when using the tractor on steep slopes.

The Dual Wheels are quick and easy to install. They double your traction surface, add weight. They consist of Tractor Tires and Tubes, Rims, and the Dual Wheel spacers and necessary attaching bolts.



GEAR REDUCTION WHEELS

You can have an even more powerful Tractor by using Geared Wheels. The Gear Reduction ratio in the wheel (3 to 1) gives the same effect as an extra low gear. The engine speed stays the same but the ground speed is only one-half as fast. The extra weight—65 pounds per wheel—gives you considerably more traction. These wheels will enable you to do a much better job of heavy work, especially with the Rotary Plow in hard soil. The wheels give nine-inch maximum ground clearance under the tractor. Tires are 20" in diameter.



SNOWBLOWER - GRAVELY POWER



MOVE THE SNOW - FAST!

Why endure the misery and freezing-cold, the hard and exasperating work of hand shoveling snow? The Gravelly does the job quickly, almost without effort! Instead of hours spent in hard work, a few minutes behind your Gravelly and your sidewalk and drive are snow free. You can get going without the delay and uncertainties of waiting for someone to dig you out — protect yourself and your family from the danger and inconvenience of snow-clogged walks and drives.

Only Gravelly Gives you a Choice of Three Snow Removal Tools!

Remember this important fact when you consider snow removal equipment. Only Gravelly offers you THREE attachments—the power-driven Snowblower, the Blade Type Snow Plow, and the power-driven Rotary Brush. Only Gravelly has the complete answer to your snow removal problem! Because these three tools—singly or in combination—can handle any snow removal situation where small power equipment is used.

Another vital fact: Only the Gravelly Tractor has the power to handle the work these attachments perform! Snow removal is heavy work—it takes plenty of dependable power, good traction, and tools that are specifically designed for the job.

The Gravelly has proved its worth by the many users in Industry, Cities, Schools, Hospitals. You can't go wrong with the time-tested Gravelly snow removal equipment.

DOES THE WORK - SNOWPLOW

SNOW BLOWER

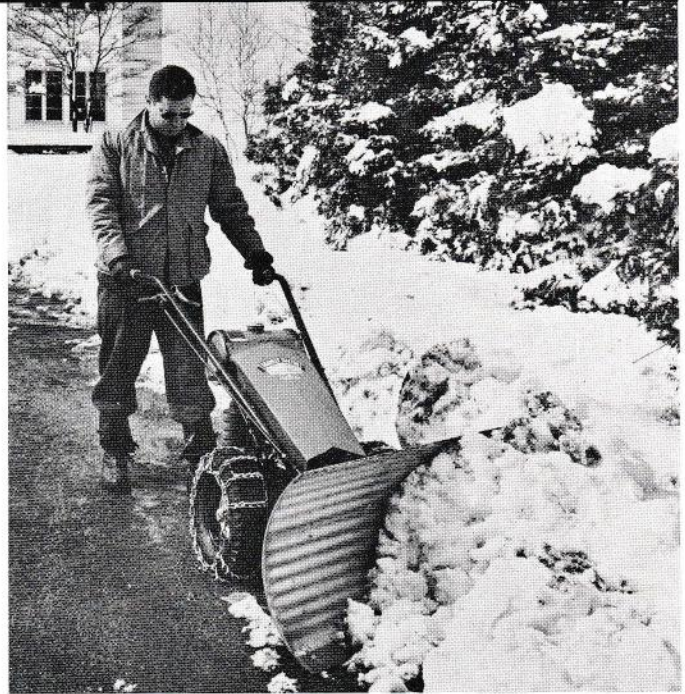
A few minutes with your Gravely Snowblower, and your snow troubles are blown away!

The Snowblower handles snow up to four feet deep, hard-packed or powdery. Picks it up, throws it as much as thirty feet, right or left, at any angle! Don't worry if other snows come while the first ones are still banked beside your walk or drive—the Snowblower puts the snow over the top of the deepest drift.

The heavy reel, gear-driven, cuts into snow crust and ice, breaking it into pieces and actually pulling the snow into the heavy duty gear-driven fan. There are no belts or chains to freeze, slip or wear on the Gravely Snowblower—it is all-gear, fully enclosed drive!

The Snowblower will work on any surface efficiently. With runners you skim the snow from any walk or drive, including Bluestone and Gravel. Without runners, you make a clean sweep of macadam or concrete.

Geared wheels are recommended when moving deep, heavy snows.



BLADE TYPE SNOW PLOW

The Snow Plow attachment is 48 inches wide. The usual width driveway is cleared in two sweeps, the sidewalk in one. The plow will handle snow up to 14 inches deep. It moves more snow better because the blade is scientifically designed to roll the snow out of the way instead of pushing it. The angle of the plow is instantly changed by only one pin adjustment. It may be set to throw snow to the left, right, or straight ahead. The wearing edge is of carbon steel, renewable—you will never wear out our plow blade. Extra heavy construction, built for the rugged snow removal jobs!

The Snow Plow attachment is a good tool for efficient and economical light landscaping. You bulldoze loose dirt, poultry litter, and similar materials. Best results will be obtained by using dual wheels, chains or gear reduction wheels to give the Tractor sufficient traction for a heavy job.



SPECIFICATIONS

SNOWBLOWER

BLADE: 25 1/2" wide, 12 Gauge (.109") Carbon Steel.
REEL: 18 1/2" diameter, 1/4" Carbon Steel, welded.
FAN: Blades 3/8" Carbon Steel, Fan Disc .109" Carbon Steel, Hub machined alloy Steel.
CASTINGS: Malleable Iron.
GEARS: Bevel Gears, machine cut from Pearlite Malleable Iron.
BEARINGS: Roller and Ball Bearings, with Reel Shaft running on Pillow Block Bearings.
FRAME: 3/4" Channel, 1" x 2" Welded supports.
DRIVESHAFTS: Cold Rolled Steel.

SNOW PLOW

BLADE: 1/4" Carbon Steel.
WEARING STRIP: 1/4" Carbon Steel.
CASTINGS: Malleable and Grey Iron.

"My driveway is about 150' long with a turning area. Last spring I had one of those coronary thrombosis affairs and either had to get something to lighten my chores, or sell and get a smaller place which I wouldn't want to do.
"Now I can clean out our driveway in twenty minutes or less with practically no effort where it used to take hours of shoveling. By actual timing I cleaned 165' of straight driveway of about 8" of snow in ten minutes flat for an old neighbor!
"If anyone wants to know what a user of your snowblower thinks of it, refer them to me."

Yours truly,

RAYMOND S. CARTER
RD No. 1, Escarpment Dr.
Lewiston, New York

POWER BRUSH



Remove Light Snow — Do a Variety of Sweeping Jobs

Home owners with long drives and walks, and with large expanses of fine lawns, find the Power Brush very useful in sweeping and cleaning. For the lawn, the Brush does a good job in sweeping debris, and removing dead grasses.

Industrial users find its compactness and power useful in a variety of jobs. Firms that do large area roofing have found the power brush "worth its weight in gold" in sweeping roofs preparatory to renovating the roof or laying new roofing. Parking lots, hospitals, cities, parks, and many others have found the brush indispensable in keeping lots, drives, loading docks, etc., free from dirt and debris in the summer, light snows in the winter.

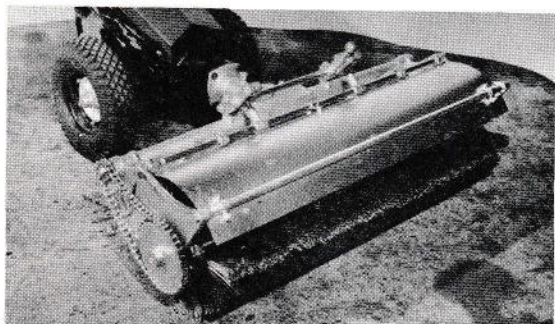
You can sweep faster than you can shovel . . . and the same principle holds true for light snows. Getting the snow before

it piles up, means clean walks and drives, free from ice. The Power Brush will sweep *clean* the first time over and gets the light snows out of the way fast!

The Power Brush sweeps a 38" width. Available with either fine or coarse brushes, which are interchangeable on the carrying shaft for maximum wear.

There is an easy brush-to-surface pressure adjustment. A single lever lifts the Brush from contact level for transportation. The Brush is used effectively with the Steering Sulky for many jobs.

Whether it is dirt, litter or light snow, the Gravely Power Brush sweeps *clean* the first time over!



SPECIFICATIONS

Drive: Cold-rolled steel shafts

Housings: Grey Iron or Meehanite

Guard: 18 Gauge Steel

Bearings: Tapered Roller and Ball Bearings

Sprockets: Carbon Steel, hardened teeth.

Dimensions;

Overall Width: 47½" Overall Height: 18"

Overall Length: 30" (Tractor to edge of brush segment)

Brush Diameter: 14"

Caster Wheels: 5" Diameter

Brush Strips: Fine or Coarse Bristle, Replaceable.

ACCESSORIES & OPTIONAL EQUIPMENT

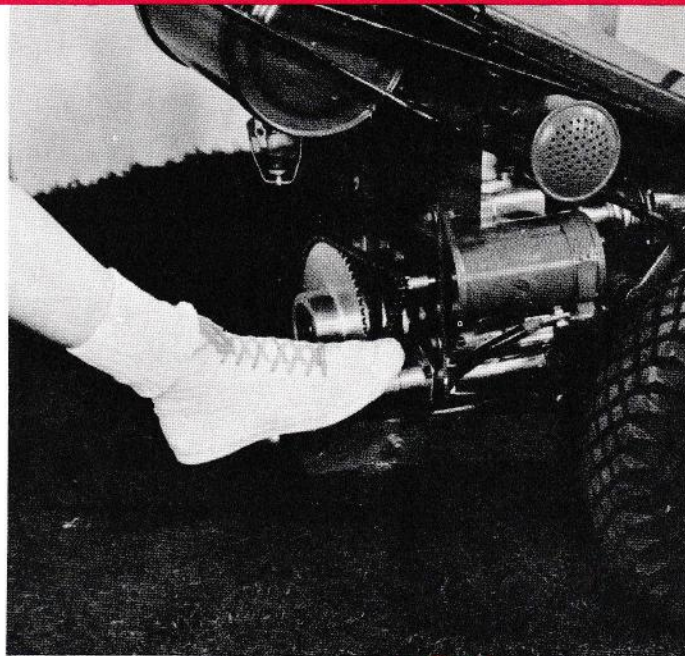
STARTER

A completely new experience in push-button power is yours with the Gravelly Electric Starter.

Now practically all the work is taken from upkeep and gardening jobs. Just touch your toe to power and you are ready for the toughest jobs!

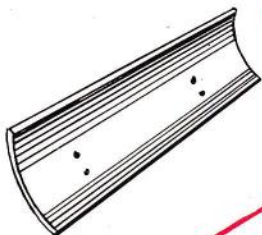
The Gravelly Starter is inexpensive. Weight is balanced perfectly to your tractor. Installation is simple and easy.

With an improved 21-cam over-running clutch, the Gravelly Starter is long-lasting and dependable. Think of the advantage of just pushing the button—in any weather, at any time—and instantly the powerful Gravelly is ready to take the drudgery from your country living!



SCRAPER BLADE

This small, inexpensive scraper blade is ideal for many small scraping and leveling jobs. Rolled blade design moves loose dirt, gravel, cinders easily. Attaches to your Gravelly Toolholder. 36" wide, 8½" high.



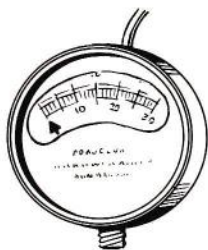
TIRE CHAINS

Tire chains will give you added traction in snow, ice, loose soil. Manufactured especially for the Gravelly, the chains are easily installed, will give you years of service.



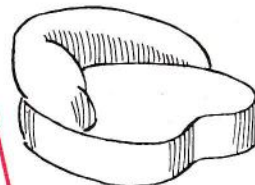
OIL PRESSURE GAUGE

Now you can check your oil pressure at a glance! Quickly and easily installed, the Gravelly Oil Pressure Gauge makes it fast and easy to check your oil pressure.



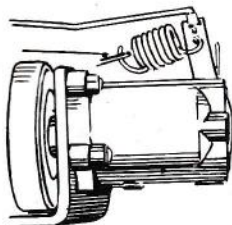
SULKY SEAT CUSHION

A soft, foam rubber cushion that makes your Riding Sulky even more comfortable. With a heavy duty plastic cover and tie-strings, the cushion floats you on air as you do your mowing.



GOVERNOR

Using a Gravelly Governor gives you amazing ease and convenience. The Governor regulates the fuel to the job automatically. You save fuel and wear on your engine with this Governor protection.



TRACTOR COVER

Contoured to fit your Tractor, of heavy, mildew-proof water-proof reinforced duck, the Gravelly Tractor Cover will protect your equipment from the weather. A must when Gravelly equipment is stored outdoors.



USE - MULTIPLIER ATTACHMENTS



LAWN SWEEPER

The Lawn Sweeper attaches to either the Gravelly Riding or Steering Sulky, is quickly attached and detached from the hitch by simply pulling a pin. Does an excellent job of sweeping fine lawns of cut grass, twigs and litter. Dumps by merely pulling a rope . . . 30" sweeping width, big capacity, a real labor-saver.

To help you increase the use of your Gravelly Equipment, we have made arrangements with reputable manufacturers to adapt certain tools to operate with Gravelly power. A partial showing of these attachments is on this page, and other equipment is being added steadily.

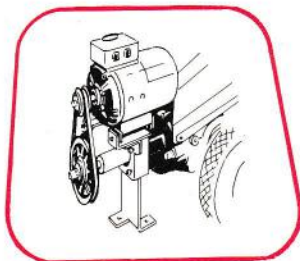
For full information, prices, and completely up-to-date literature, write for "Gravelly Use-Multiplier" Booklet.

These items are sold on a "Special Order" basis, shipped directly from the manufacturer to you.



SEEDER-SPREADER

A big, 5 foot seeder-spreader that spreads lime, grass-seed, fertilizer quickly, evenly and efficiently. Attaches to Gravelly Rear Hitch. Seeding plate adjusts rate of spread quickly and easily.

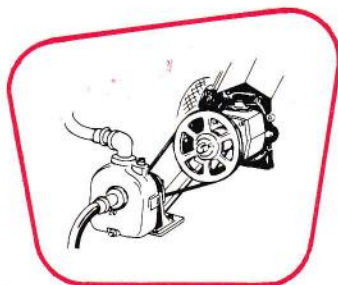


GENERATOR

1500 Watt Generator for emergency power. Complete with bracket. Gravelly Power Take Off required.

PUMP

Low pressure, high capacity pump for volume pumping of liquids. Complete with bracket. Gravelly Power Take Off required.



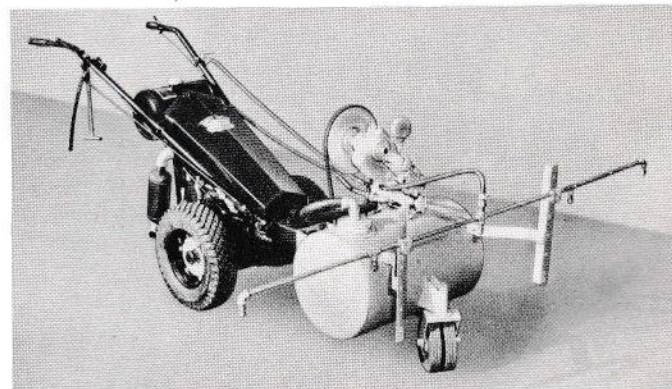
SEMI-PNEUMATIC TIRES

No more punctures. Special semi-pneumatic tires never go flat. One inch wider for more traction surface. Ground grip tread only.



BLITZ-FOGGER

Gets rid of insects, mosquitos, fast. Puts out a cloud of fog which kills insects on contact, harmless to human beings. Complete with 1 qt. Thermaline fog.

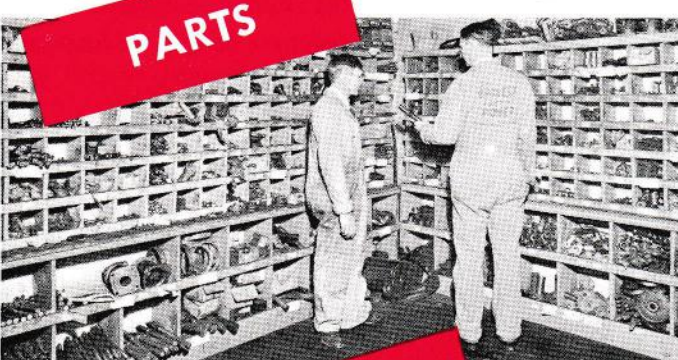
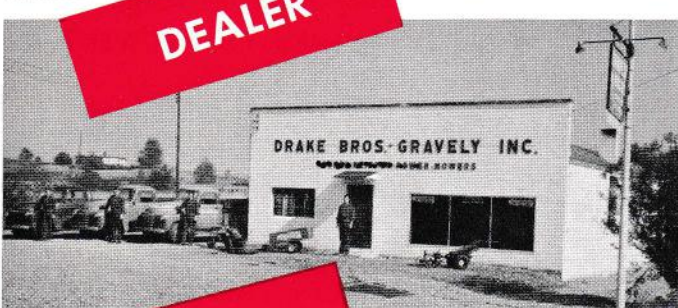
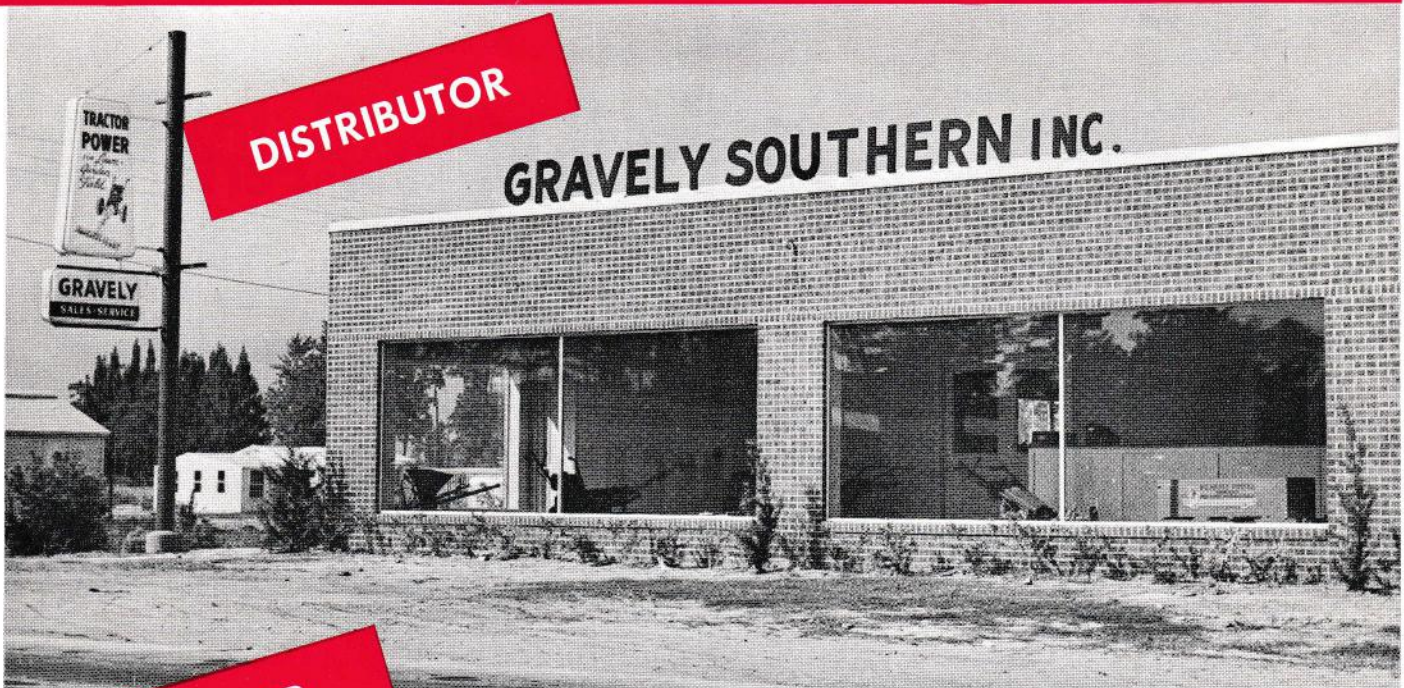


HOME 'N-GARDEN SPRAYER

A 15 Gallon Sprayer that will handle every lawn and garden spraying chore. Spray pump handles even abrasive and corrosive sprays . . . optional boom for lawn feeding or spraying, garden work—complete with spray gun. Gravelly power take off required.

ASK FOR "USE-MULTIPLIER" FOLDER — FREE!

WORLDWIDE SALES AND SERVICE



A Specialized Organization To Serve You Best

On this page are illustrated the four main features of the world-wide Gravelly sales and service organization. The Company-owned Distributor sells and services retail in its own area, and supplies its Dealers with equipment and parts. The Dealers are independent business men, most of whom do nothing but sell and service Gravelly Equipment. You will find this same organization not only in the U.S.A. but in Canada and most foreign lands.

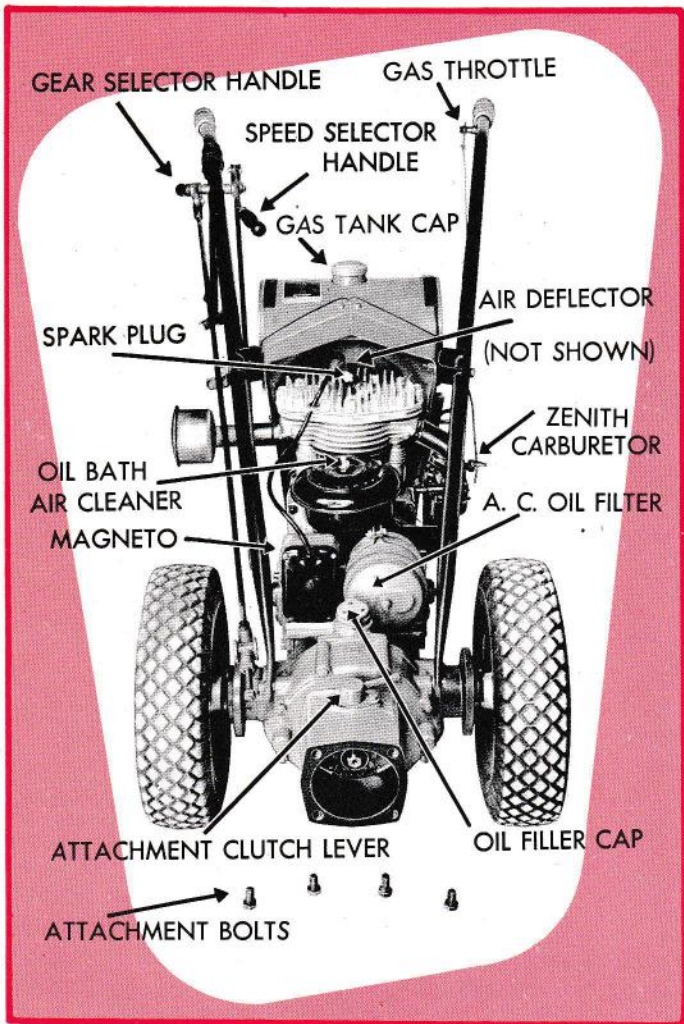
Special Tools Trained Mechanics

Both the Dealer and Distributor have tooled their shops to render the most efficient service on the Gravelly. Their mechanics are trained in factory methods. They stock Gravelly repair parts at all times. Their service is fast and efficient, therefore it costs you less and serves you better.

Buy With Confidence

You buy the Gravelly with confidence — this world-wide organization could only have been built by consistently providing an excellent products and dependable service to our Gravelly users!

HERE'S WHY **GRAVELY** IS



Built To Out-Perform All Others

The next page shows you many exclusive mechanical features. But individual features are not what you buy.

You buy *performance*—the whole Gravelly Tractor. Put all these mechanical features together and you have the finest tractor money can buy. You have a tractor that will outperform any other tractor.

SEE FOR YOURSELF!

Until you actually get behind a Gravelly, until you see and feel for yourself the amazing power and versatility of the Gravelly, you will have no conception of what POWER upkeep and POWER gardening really mean.

When you use your Gravelly and see your work done faultlessly . . . when you suddenly realize what a wonderful job you have done with such amazing speed and ease . . . then you realize that the Gravelly is *your* tractor.

Only then can you know the absolute, complete satisfaction that comes to you when you have bought the best—and proved it by job test.

The Gravelly has integrated design, with 35 years of specialized experience in manufacturing Gravelly equipment. The next page shows you some of the many exclusive features that have helped build the Gravelly reputation to that of the acknowledged leader in its field.

With all these features, you still buy the Gravelly at a price that compares favorably with many other makes with less horsepower!

SATISFACTION

And remember this. The price you pay for the Gravelly will soon be forgotten. But the satisfaction of using the best, of investing your money wisely, of getting your work done in the best possible way . . . that satisfaction is yours for *years*. Because Gravelly is a lifetime investment in power for your jobs!

GROUND SPEED OF YOUR CHOICE

Now you can buy a Gravelly Tractor with the ground speed of your choice, to suit your pace, your job. Three models are available, and your Gravelly Dealer will suggest the one best suited to your particular needs. Below is a table giving the ground speeds available with the three models.

TABLE OF GEAR SPEEDS FOR ALL MODELS

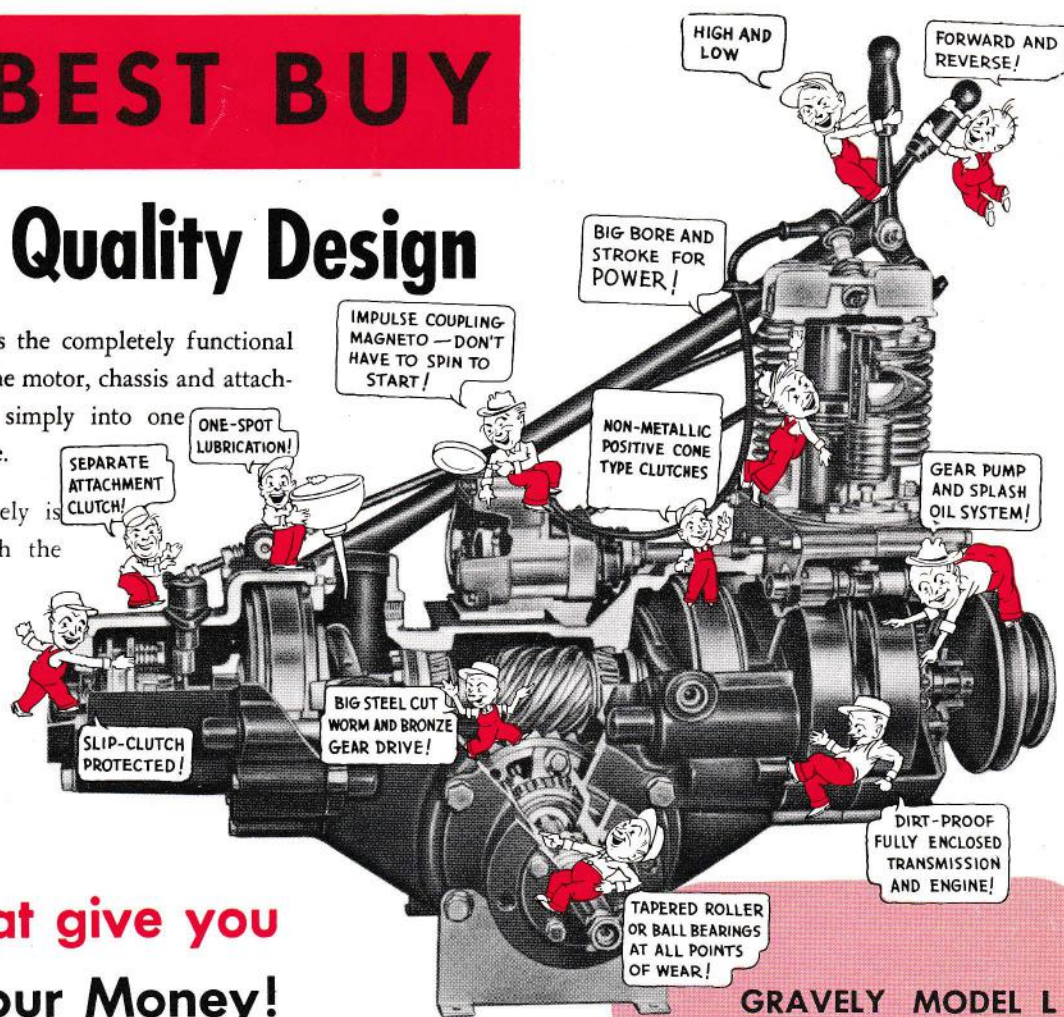
LS GRAVELY	LI GRAVELY	L GRAVELY
High Gear:		
1 mph	1½ mph	2 mph
1½ mph	2¼ mph	3 mph
2 mph	3 mph	4 mph
Low Gear:		
½ mph	¾ mph	1 mph
1 mph	1½ mph	2 mph
1½ mph	2¼ mph	3 mph

YOUR BEST BUY

Practical, Quality Design

This cutaway view shows the completely functional design of the Gravelly . . . the motor, chassis and attachment flowing cleanly and simply into one compact, precision machine.

Each part of the Gravelly is designed to be used with the other — not merely assembled. The Gravelly uses the same type of drive and transmission as an automobile for dependable power.



Features that give you More for your Money!

Power! The Gravelly engine is conservatively rated at 6.6 HP. Its large bore and stroke at a comparatively low piston speed means dependable power for the toughest jobs. Power is transmitted to the job through gears and splined steel shafts — no belts or chains to slip or wear!

Precision Made in a modern factory devoted exclusively to the manufacture of Gravelly products.

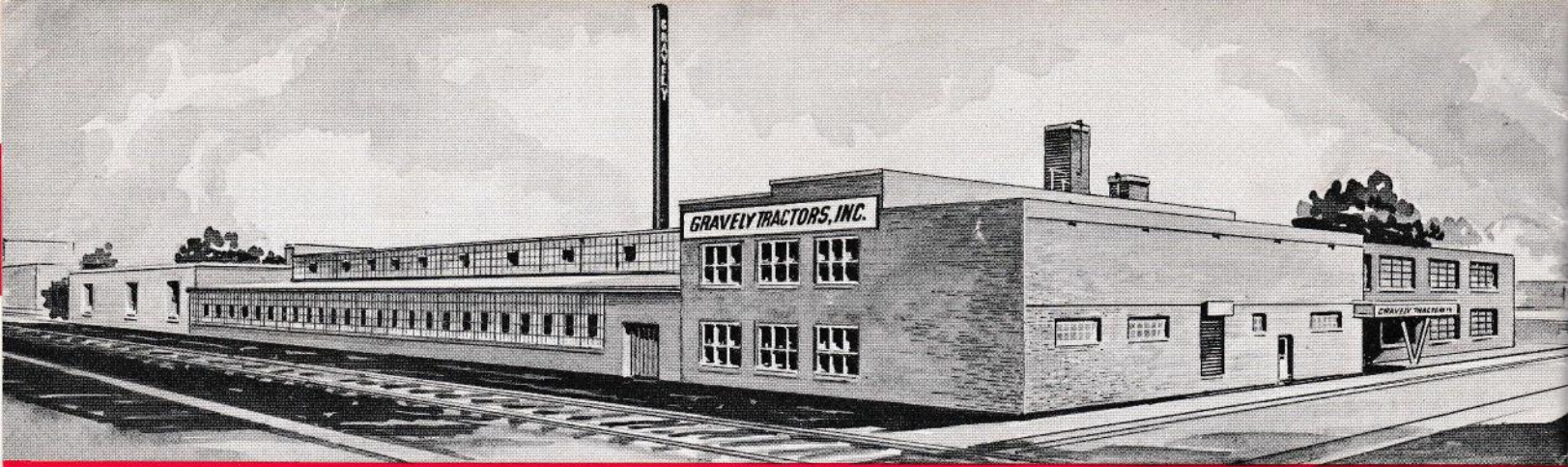
Safety Clutch Protected. Every Gravelly power attachment is protected against shock damage by a special Gravelly Safety Clutch. This clutch dissipates the shock and stalls the tractor without damage to either attachment or tractor. The Clutch transmits the full power of the engine . . . but saves your equipment from breakage and damage when you strike an obstacle.

Attachments Power-Designed to put the power to the job. Gravelly is unique because each attachment is designed as an integral part of the tractor, to give the maximum performance at the job.

Unique Swivel Action. Only the Gravelly gives you complete Swivel Action. The attachments follow the contour of the ground, regardless of the position of the Tractor Wheels.

GRAVELLY MODEL L TRACTOR SPECIFICATIONS

MOTOR: Gravelly (own make) one-cylinder, 4-stroke, T-head type with removable head. Air-cooled by motor driven fan.
BORE: 3¼ inches. **STROKE:** 3½ inches.
RINGS: One Oil Ring, 2 Compression Rings, Top Ring Chromed.
VALVES: Mechanical. **CARBURETOR:** Zenith, Gravelly Special.
OILING SYSTEM: Gear pump and Splash System. Oil under pressure to connecting rod and drive shaft bearings.
MAGNETO: Impulse Type. Brand: Wico. **OIL FILTER:** A.C.
AIR CLEANER: Oil Bath. Brand: United Specialty.
BEARINGS: Tapered Roller or Precision Ball Bearings at all important points.
HORSEPOWER: 6.6 Horsepower at 2600 RPM.
TRANSMISSION: Transmission and Timing Gears Alloyed Iron and hardened steel. Precision Cut Teeth.
DIFFERENTIAL: (Automotive Gear Type) hardened steel cut Bevel Gears, Steel Worm, special alloyed bronze Worm Gear.
CLUTCH: Two double-acting cone-type clutches, one as speed selector, one giving forward and reverse motion. Planetary Gears. Clutch Bands special bonded lining to steel.
CLUTCH, SAFETY: All power attachments individually protected from shock by Safety Clutch, consisting of two Fiber and one Steel Disc enclosed in springloaded driving plates. Discs slip under sudden shock, drive attachment at full Horsepower under load.
HEIGHT: 28 inches (Not including adjustable handles).
OVERALL WIDTH: 24 inches at widest point.
LENGTH: 55 inches (Not including attachments).
WEIGHT: Net, 296 lbs. Crated, 355 lbs. domestic, 410 lbs. export.
THROTTLE: Thumb throttle, Optional Governor (Pierce).
GAS TANK CAPACITY: 1¾ Gallons. **OIL CAPACITY:** 5 Pints.
TIRES: 4.00 x 8, 16" O.D. 2 Ply, Sure-grip or Diamond tread.



30 YEARS OF SPECIALIZED EXPERIENCE!

**SEE WHAT A GRAVELLY
USER SAYS ABOUT
HIS PLEASURE IN
BUYING THE BEST!**

Gravelly Tractors, Inc.
Dunbar,
West Virginia

Gentlemen:

I can't imagine how I could get along without my Model L Gravelly equipment. For the past two years I have lived on a ten acre tract of lawn, orchard and wooded land with a large garden, some grapes, berries, etc. Besides several acres of level mowing, there are also quite difficult slopes and grades to maintain, all of which is handled very nicely with your equipment.

There has been no mechanical trouble whatsoever in over a year and a half of use and the machine seems to be as good as new today.

I use both sizes of cutter bar in mowing as well as the cultivating and weeding equipment for garden and vineyard. This work is done by myself out of business hours and I not only enjoy seeing the results but there is actually pleasure in it.

The Gravelly makes possible for me the difference between that of just a house in the country with perhaps only a small lawn and garden and that of a well kept ten acres with an expanse of lawn and all the other areas in good order. My friends wonder how it is done and your Gravelly equipment is really the answer. There should be a very broad market for something so practical as this.

Very truly yours,

Kenneth Alcock

KACool/ew

In 1922 the Gravelly Tractor was offered to the world as a novel and practical time-saving invention—a power driven small tractor. Improvements and new models have been added, and the many varied and useful attachments that you have read about have been developed.

The Gravelly is produced in two factories devoted exclusively to the manufacture of the Gravelly Tractor, including its motor, and its attachments. Gravelly Tractors, Inc., Dunbar, West Virginia is the "home" factory. Supplementing its production is Gravelly Tractors, Southern Region, at Albany, Georgia. Each manufacturing operation is controlled, each machine produced as a complete unit, each part *designed* to be used with the other. Not merely assembled, but completely designed and manufactured by the Gravelly Company. You will do best by buying the machine that is time-proved. More than a quarter of a century of engineering and manufacturing skill are back of the famous Gravelly.

FREE DEMONSTRATION

Like our product, our sales policy is better than the usual one. We do not ask you to buy a Gravelly until you have seen what it will do for you on your own ground, under your own conditions. Our Dealers and Distributors are glad to give you the benefit of their experience with power equipment, glad to show you the Gravelly at no obligation.

Ask your Dealer or Distributor for your free demonstration—or write us and we will arrange for a representative to visit you and quote prices on the tools they would recommend for your work.

Request your free demonstration today!

SOLD BY

GRAVELLY TRACTORS, INC. DUNBAR, WEST VIRGINIA, U. S. A.